

Fractionation, rearrangement and subgenome dominance

David Sankoff* and Chunfang Zheng

Department of Mathematics and Statistics, University of Ottawa, Ottawa, Canada K1N 6N5

Received on April 3, 2012; revised on XXXXX; accepted on XXXXX

Associate Editor: XXXXXXXX

ABSTRACT

Motivation: Fractionation is arguably the greatest cause of gene order disruption following whole genome duplication, causing severe biases in chromosome rearrangement-based estimates of evolutionary divergence.

Results: We show how to correct for this bias almost entirely by means of a “consolidation” algorithm for detecting and suitable transforming identifiable regions of fractionation. We characterize the process of fractionation and the performance of the algorithm through realistic simulations. We apply our method to a number of core eudicot genomes, and by studying the fractionation regions detected, are able to address topical issues in polyploid evolution.

Availability: Java code for the consolidation algorithm is available online.

Contact: sankoff@uottawa.ca

1 INTRODUCTION

Fractionation (1), the loss of duplicate genes after whole genome duplication (WGD), causes more gene order disruption than classical chromosomal rearrangements such as inversion or reciprocal translocation. WGD and fractionation are particularly prevalent in flowering plants (2), where the cycle of the two processes also involves the constant excision of excess non-coding DNA (3; 4), a major difference between these organisms and other evolutionary domains, such as the mammals.

Gene order disruption follows from the partly random choice of which of the two copies is deleted, i.e., which of two homeologous chromosomes retains the remaining single copy of the gene. This process was first hypothesized by Wolfe and Shields in their 1997 demonstration of the ancient WGD of *Saccharomyces cerevisiae* (5), suggesting “... this is the result of random deletion of individual duplicated genes from one or other chromosome subsequent to the initial duplication of the whole region.” This loss pattern was further highlighted years later by the comparison of the *S. cerevisiae* gene order with that of related diploid yeasts by Dietrich *et al.* (6) and Kellis *et al.* (7), who called it “interleaving”, while Freeling was coining the usage “fractionation” in the context of plant genomics.

When a number of adjacent duplicate pairs lose a group of their redundant genes from one homeolog and another group from the other homeolog, as in Fig. 1, methods for inferring the rearrangement distances between the WGD descendant (referred to as an “ancient tetraploid” despite being a present-day genome, long since re-diploidized) and an unduplicated sister genome

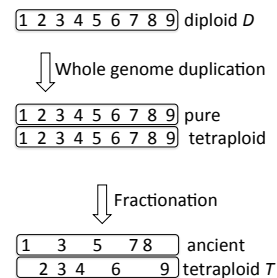


Fig. 1. Fractionation leading to different adjacencies in diploid and ancient tetraploid.

automatically infer that there are rearrangement breakpoints where adjacency no longer exists between the two groups of single-copy survivors. This artificially inflates the inferred number of reciprocal translocations and the greatly exaggerates the overall amount of chromosomal rearrangement between the two sister genomes. Our work is designed to computationally detect, characterize and correct for this impediment to the study of evolution.

Key to our method is the identification and isolation of “fractionation intervals”, regions in both the ancient tetraploid and its sister diploid that have become entirely single-copy and may or may not have been rearranged internally, but have (so far) been unaffected by rearrangements exchanging genes from within the interval and genes external to the interval. The quantitative nature of these intervals bears on current topics of interest in plant evolutionary genomics, whether duplicated genes are silenced or deleted one by one or through the deletion of longer stretches of DNA, whether a fractionation regions tends to lose genes largely from one of the homeologous chromosomal segments or equally from the two, and whether any such bias towards one homeolog persists from the original WGD event and is unaffected by chromosome shuffling.

2 METHODS

2.1 Methodological preamble

In this paper, we focus on the evolutionary divergence of a genome after WGD compared to a related diploid. The mathematics of genome comparison at the level of gene order or conserved synteny blocks is well worked out (reviewed in (8)) when the two genomes have identical complements of single-copy genes only, but the problem is more difficult when they have different gene

*to whom correspondence should be addressed

complements, or genes that occur two or more times in a genome. There are many approaches, as reviewed in (9). These range from “guided genome halving” where single-copy genes may simply be excluded from ancient tetraploid (10) or included in an *ad hoc* way (11), through “duplication-loss” models where the ordering of loss and duplication events is the focus (12), to the “exemplar method” where it is the duplicate genes that are excluded, or rather reduced to single-copy status in an optimal way prior to the comparison, and everything in between (13). While all of these are well-motivated in particular contexts, they all invoke objective functions that are largely irrelevant to fractionation.

The central datum in genome comparison algorithms is generally the “gene adjacency”. Ideally, the genes are oriented, i.e., their 5’ and 3’ ends are distinguished, and when we speak of two genes being adjacent, we mean that the 3’ end of one is adjacent to the 5’ end of the next one, if they are on the same DNA strand, or that their two 5’ ends (or two 3’ ends) are adjacent if they are on complementary strands. An adjacency is thus defined by two specific gene ends, and not by two genes.

Decomposing a genome into its adjacencies, in order to take advantage of genome comparison algorithms, loses no information in the case of diploid genomes, and relatively little information when duplicate genes are allowed. In the present paper, we will use the adjacencies directly in order to bypass the arbitrary use of objective functions and other assumptions inherent in most comparison algorithms. In particular, it will be appropriate in the WGD-fractionation context to simply compare the sets of adjacencies that occur at least once in a genome as the relevant representation of that genome.

2.2 Excess adjacencies as a measure of rearrangement.

As a doubled genome evolves through genome rearrangement and/or fractionation, there is a direct effect on the inventory of oriented gene adjacencies. Initially, a new tetraploid and an unduplicated sister genome will have the exact same adjacencies, although these will have multiplicity 2 in the tetraploid. Over time, rearrangement will change the adjacencies in the diploid, without appreciably changing the total number of adjacencies. At the same time, in the tetraploid, both rearrangement and fractionation will add new adjacencies without necessarily losing the original ones, since an evolutionary event need only affect one gene copy or one homeolog at a time, leaving the other intact. Thus the total number of different adjacencies in the diploid and WGD descendant, in excess of the number in the diploid alone, measures the degree of evolutionary divergence.

We carried out simulations of the schema in Fig. 2 to quantify the effect of rearrangement on the number of adjacencies, involving random chromosomal inversions and reciprocal translocations in the proportions 10:1. The simulations modeled a diploid with 24,000 genes randomly divided among 20 chromosomes. The two breakpoints of each rearrangement were chosen at random on the same chromosome for inversions, and on two randomly chosen chromosomes, for translocations. A separate series of simulations modeled the inversions as short (random inversion length drawn from a geometric distribution, with mean length of 5 genes) and long, with two random end points, in the proportion 20:1. The differences in the results between the two kinds of model were

negligible in all analyses in this paper, including the one in Section 4.4 below.

All simulations were run 20 times, and their average values were plotted. Because of the large number of genes in the simulations, variability among the replicates would be almost imperceptible on the scale of the diagrams to be presented here.

Fig. 3 shows the tight linear relationship between the number of rearrangements and the increase in the number of adjacencies.

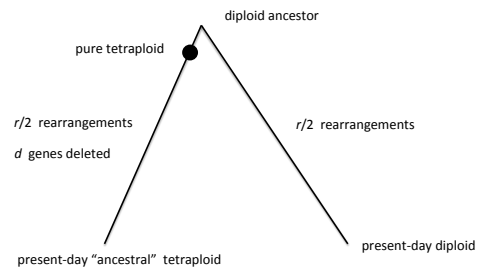


Fig. 2. Schema for simulation of divergence between an ancient tetraploid and a sister diploid.

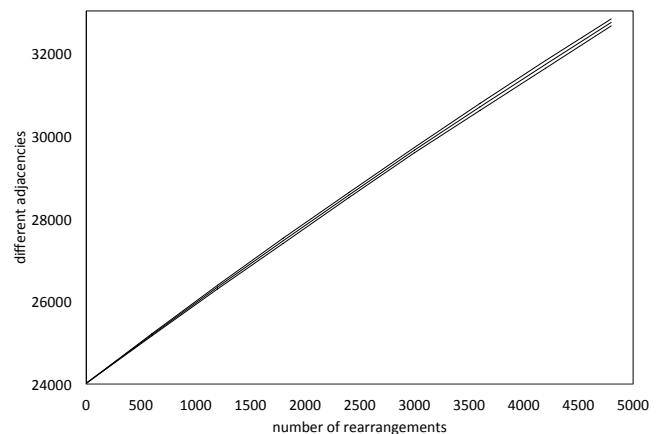


Fig. 3. Increase of excess adjacencies as a function of number of rearrangements. Showing curves for mean and +/- two standard deviations.

Although we can invent examples where the number of adjacencies and the number of rearrangements are less predictive of each other, these would be encountered with negligible frequency in real data or in simulations. In the ensuing sections, therefore, we will use the number of excess adjacencies as a proxy for the amount of rearrangement.

2.3 The effects of fractionation on adjacencies

Fig. 4 shows some results of extensive simulation experiments to assess how the process of fractionation impacts the apparent amount of rearrangement. The solid lines show the effect of increasing amounts of fractionation on the apparent amount of rearrangement, a gross distortion.

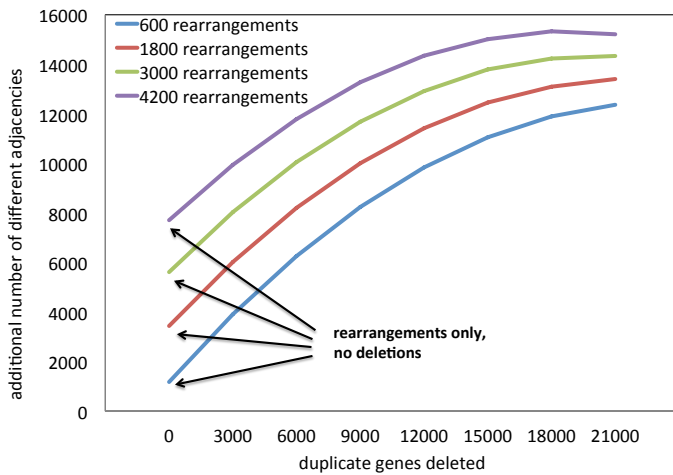


Fig. 4. Simulated increase in apparent rearrangement in an ancient tetraploid compared to a diploid sister genome, as a function of actual rearrangements and number of deleted duplicate genes.

3 ALGORITHM

We developed the **consolidation algorithm** to assess and correct for this distortion. This focuses on detecting and accounting for two homeologous regions of single-copy genes in the ancient tetraploid which contain no genes in common (since the genes concerned are single-copy) but whose combined (or *consolidated* (1)) gene content is exactly the same as some contiguous region in the diploid. Maximal regions like this we call Class 1 regions, in contrast to Class 2 regions, where there is only one region in the tetraploid which contains only, and exactly, the same single-copy genes as a region in the ancient tetraploid, but where there is sometimes clear adjacency evidence of where the duplicate copies of these genes were deleted, as in Fig. 5. Classes 1 and 2 exhaust all the single-copy genes in the ancient tetraploid. The algorithm for detecting and listing these regions runs in linear time in the number of genes. Once

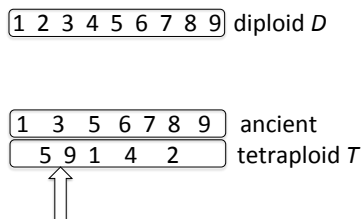


Fig. 5. Arrow indicates positioning of third (empty) fractionation interval for genes 6,7, 8, on the evidence of the positioning of these three genes between 5 and 9 in the diploid and on one homeologous chromosome.

the regions are identified, the three components of a Class 1 region are replaced by a new, labelled, dummy gene. Similarly, for the two components of a Class 2 region, with a third copy of the dummy gene placed whenever possible according to the above-mentioned adjacency evidence.

The two genomes, thus reduced by the replacement of single-copy genes by a lesser number of dummy genes, is then examined for excess adjacencies.

Note that the genes in this discussion are all oriented, i.e., their 5' and 3' ends are distinguished, and when we speak of two genes being adjacent, we mean that the 3' end of one is adjacent to the 5' end of the next one, if they are on the same DNA strand, or that their two 5' ends (or two 3' ends) are adjacent if they are on complementary strands. An adjacency is thus defined by two specific gene ends, and not by two genes. Nevertheless, in the ensuing discussion we may sometimes speak of adjacent genes without introducing any ambiguity.

3.1 Consolidation algorithm

Input: Triple (L, D, T) , where

- L is a set of genes,
- D is a diploid genome, i.e., L is partitioned among a number of chromosomes; the genes on a chromosome are ordered,
- T is a “ancient” tetraploid, i.e., each gene of L occurs in either one or two copies; the genes are partitioned and ordered on a number of chromosomes, with no constraint on positions of two copies of the same gene,
- For each gene $g \in L$, pointers $(C_1(g), p_1(g), C_2(g), p_2(g), C_3(g), p_3(g))$ indicate its chromosomal membership and its position in that chromosome’s order. The subscript “1” refers to D , “2” and “3” refer to the occurrences of g in T , where $C_3(g) = p_3(g) = \emptyset$ if g occurs only once in T .

Output: Triple (L', D', T') , where

- D' is a diploid genome with gene set L' and T' is a “pure” tetraploid (all genes occur exactly twice) on L' ,
- $L' = L_2 \cup L_V$. $L_2 \subseteq L$ is the set of genes with two copies in T , and L_V is a set of “virtual” genes, each one representing a triple of intervals of genes (in L), (I_1, I_2, I_3) , the first, I_1 , on a chromosome in D , the second and third on chromosomes in T such that $I_2 \cap I_3 = \emptyset$, $I_2 \cup I_3 = I_1$. The I_1 from different virtual genes are disjoint and their union is $L \setminus L_2$, the entire set of single-copy genes in T . Moreover, the elements of L_V are jointly maximal in that the union of no two of them can be a virtual gene.

detect fractionation intervals

While there are still single-copy genes in T that have not been placed intervals, create new element of L_V as follows:

- Initialize empty intervals I_1, I_2, I_3 . Find the first single-copy (in T) gene in D , add it to I_1 and I_2 .
- While the next gene in D is a single-copy (in T) gene on the same chromosome as the other genes in I_1 and it is on the same chromosome as I_2 or I_3 , add it to I_1 and to I_2 or I_3 . If it is not on the same chromosome as I_2 , and I_3 is empty until the present time, the gene determines on which chromosome the interval I_3 is to be located.

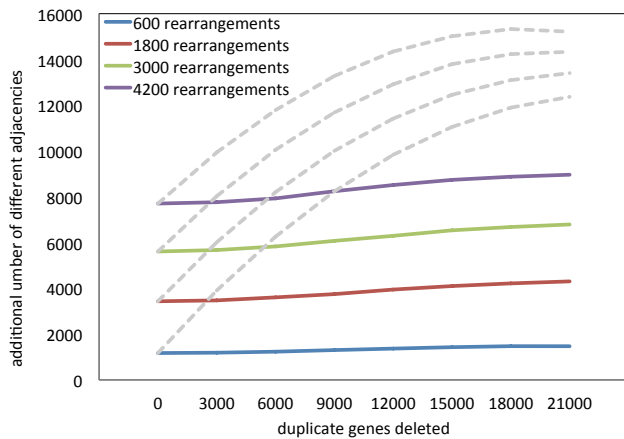


Fig. 6. Solid line: Apparent amount of rearrangements stable after application of **consolidation algorithm** and taking into account adjacencies within fractionation regions. Dashed line: Before algorithm.

- While the genes in I_2 (or I_3) are not contiguous, remove the last gene assigned to I_1 and I_2 or I_3 .
- If $I_3 \neq \emptyset$, the virtual gene g representing the triple (I_1, I_2, I_3) is added to L_V , and it replaces the genes in I_1 on D , and the genes in I_2 and I_3 on T .

Else (if $I_3 = \emptyset$),

- **place I_3**
Consider the two genes (actually gene ends) a and c adjacent on the left and right of I_1 in D and the two genes b and d adjacent on the left and right of I_2 in T . Locate all further copies of a, b, c and d in T , and insert I_3 , or the virtual gene representing I_3 into T adjacent to one, or between two, of these gene ends, in such a way as to minimize the number of new adjacencies thus created. This involves trying all eight combinations or orientations for the virtual genes in its three locations
- Now the virtual gene g representing the triple (I_1, I_2, I_3) can be added to L_V , replacing the genes in I_1 on D , and the genes in I_2 and I_3 on T .
- There are minor details, which we will omit, on handling “telomeric”, i.e. at the ends of chromosomes, genes.

Note that **place I_3** contains an optimization step. The rest of the algorithm is deterministic and it may very well not call **place I_3** at all. Nevertheless, the consolidation algorithm may be reformulated as a combinatorial optimization problem, where the objective is to minimize the number of different adjacencies by “placing” all the empty I_3 intervals at the same time.

For simplicity, this algorithm, as presented, has quadratic worst case running time, in the number of genes, but in practice, on large genomes both real and simulated, it takes seconds or minutes. A linear worst case running time has been devised by J. Kováč (personal communication).

The consolidation algorithm treats the fractionation intervals as identical units, one in the diploid and two in the tetraploid. In this

way it accounts for rearrangements which includes a whole interval in its scope, but also rearrangements which disrupt an interval, in that a fractionation involving such an interval will generally be automatically counted as two intervals, resulting in two virtual units instead of one. What the consolidation algorithm does not account for, however, are rearrangements occurring completely *within* one of the fractionation intervals.

To correct for this, within each fractionation regions, we first consider all the adjacencies in I_1 and compare each I_2 and, if necessary, I_3 , with I_1 . For the comparison, with I_2 , for example, we delete the genes in I_1 not in I_2 . We count only those a_2 adjacencies in I_2 not in the reduced I_1 . We add the number of these “rearranged” adjacencies to the set of adjacencies produced by the consolidation algorithm.

4 RESULTS AND DISCUSSION

4.1 Applying the algorithm to simulated genomes

As can be seen in Fig. 6, for moderate rearrangement distances, and for a wide range of fractionation rates, our procedure almost completely wipes out the distortion caused by the fractionation.

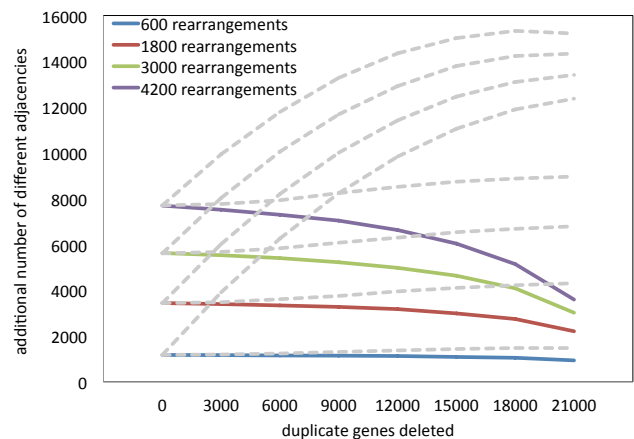


Fig. 7. Solid lines: Change in apparent rearrangement in an ancient tetraploid compared to a diploid sister genome, as a function of actual rearrangements and number of deleted duplicate genes, when single-copy genes are ignored. Dashed lines: including single-copy genes, before and after application of consolidation algorithm.

4.2 The study of fractionation regions

The consolidation algorithm was motivated as a way of correcting estimates of genomic divergence, but an important byproduct is its systematic identification of fractionation regions. This will be the focus of the remainder of this paper, including its empirical aspect. First we will explore fractionation regions in the contexts of our simulations, and in the next section discuss how to analyze this process in the core eudicots.

4.3 Why can't we just ignore fractionation regions?

The consolidation algorithm adapts genomic rearrangement assessment to the case of mixed duplicate and single-copy genes, through the device of virtual genes representing fractionation regions. We may ask, what if we just delete all single-copy genes and compare the diploid sister genome with whatever duplicates remain in the ancestral tetraploid? This question is motivated by the original approach (since abandoned) to the “guided genome halving” problem (14).

The results, shown in Fig. 7, show that this alternative approach is not a satisfactory way of handling single-copy genes, considering its substantial underestimate of the amount of rearrangement, which is especially severe when the fractionation process is far advanced.

4.4 Rearrangements and fractionation region size

When only a few of the homeologous gene pairs have been reduced to single copy, fractionation regions will tend to be small and dispersed across the genome. Most rearrangements will not change the contents of any fractionation region. When most of the gene pairs have been reduced to single copy, fractionation regions will tend to be longer, especially if there have hitherto been few rearrangements. Then each new rearrangement is likely to disrupt a fractionation region, usually breaking it into two. This tendencies can be seen in Fig 8, where the fractionation regions for a genome with 15,000 out of 24,000 gene pairs reduced to single copies, are little affected by rearrangements. Where 21,000 of the pairs are thus reduced, the size of the fractionation regions is much more sensitive to rearrangements.

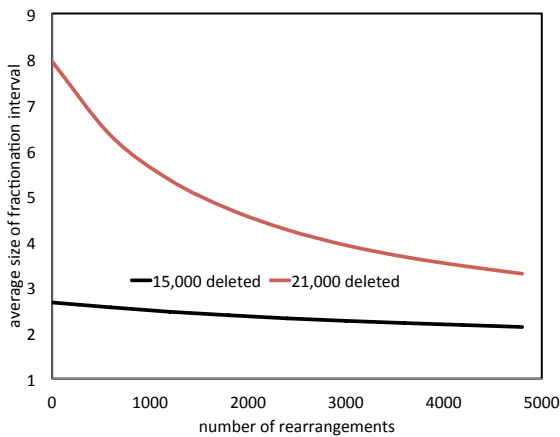


Fig. 8. Fractionation region size as a function of number of rearrangements.

4.5 Fractionation in the poplar genome

In applying our method to the genome of poplar (*Populus trichocarpa*) (15), an ancestral tetraploid, compared to diploid sister genomes, grapevine (*Vitis vinifera*) (16) and cacao (*Theobroma cacao*)¹ (17), we discovered that the large majority, 70-90%, of

¹ Data were drawn from the CoGe platform (18; 19), and processed using the SynMap procedure, with a 2:1 syntenic depth setting to account for the

the apparent rearrangement is actually attributable to fractionation. We also carried out matching simulations, with the same number of duplicate and single-copy genes, produced by random paralog deletion, and a number of random rearrangements, mostly inversions, to produce the same number of excess adjacencies. Examining the consolidated regions detected by our algorithm, there are a number of regions much longer than those in the simulations (Fig. 9), suggesting a non-independence of deletion events affecting neighboring genes, and clear tendency for genes to be deleted in one of the two homeologs, as would be predicted by the recent theory of subgenome dominance (20): “Genes are disproportionately lost from one parental subgenome, the subgenome that is less expressed in the polyploid.”

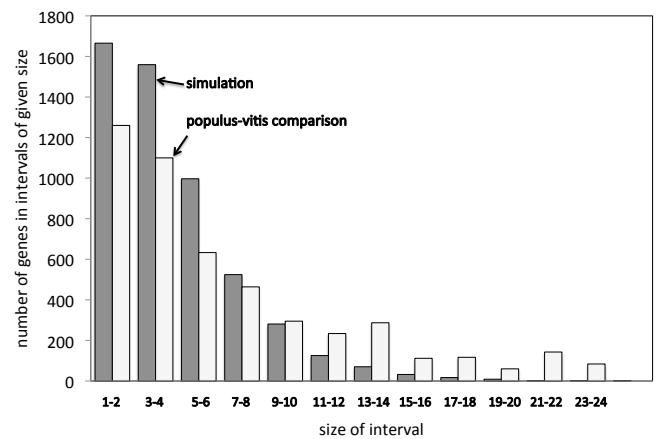


Fig. 9. Size of *Populus-Vitis* fractionation regions compared to simulations matched for rearrangement and deletion rates. In *Populus-Vitis*, the single-copy genes are concentrated in fewer, larger regions.

4.6 Effect of deletion event run size

Motivated by the discrepancy between the poplar genome fractionation region sizes and the results of the simulations, we ran new simulations where instead of choosing duplicate genes to delete one at a time at random, we deleted one or more contiguous genes at a time, starting at a random position in the genome, according to a geometric distribution with mean μ . To model the quantitative bias in the fractionation process, successive genes were deleted from the same homeolog with “continuation” probability $p \geq \frac{1}{2}$ and from the opposing homeolog with probability $1 - p$.

To infer the best values of the parameters μ, p and the r number of rearrangements to account for the poplar-*Vitis* and poplar-cacao comparison, we simulated the evolutionary process with a fixed number of genes in the diploid and tetraploid and a fixed number of single-copy genes in the tetraploid. We searched in a 3-dimensional grid where $\mu \in [1, 2], p \in [0.5, 1.0]$ and r takes on a wide range of values depending on μ , for the values of the parameters that could produce the same number of adjacencies before and after

ancient tetraploidy of poplar, and minimum syntenic block length 2 (to avoid the excessive noise with minimum size 1 but capturing more orthologies than with higher minimum sizes).

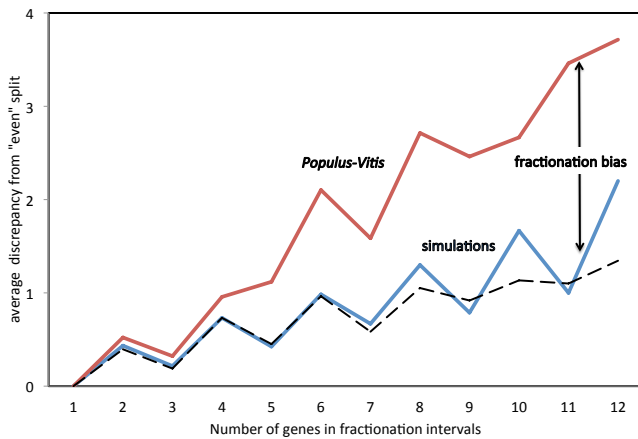


Fig. 10. Discrepancy in two *Populus* intervals in the number of genes, compared with random simulations. In *Populus* regions, the single-copy genes are concentrated in one of the two homeologous intervals. Jagged nature of graphs due not to statistical fluctuation but to measurement of discrepancy from an “even” split, which is necessarily calculated slightly differently for even and odd totals of genes in the fractionation intervals. Black dashed line represents simulations with deletion event run size geometrically distributed with mean 1.7.

Table 1. Inference of deletion event size parameter μ , continuation parameter p and number of rearrangements r , necessary to model poplar-*Vitis* and poplar-cacao comparisons. Adj₁: adjacencies before consolidation, Adj₂: adjacencies after consolidation, f : number of fractionation regions, \bar{s} : average size of fractionation regions.

μ	r	p	Adj ₁	Adj ₂	f	\bar{s}
<i>Populus</i> : 18,309 genes, 5287 single-copy, <i>Vitis</i> : 11,798 genes						
real genome data: 16,877 10,988 2356 2.24						
1	680	1	16,866	10,970	3005	1.76
1.7	1040	0.5	16,900	10,957	2355	2.23
2	1120	0.5	16,888	10,941	2184	2.42
<i>Populus</i> : 18,221 genes, 5557 single-copy, <i>Cacao</i> : 11,889 genes						
real genome data: 16,357 10,279 2297 2.42						
1	320	1	16,618	10,074	3014	1.84
1.8	800	0.7	16,433	10,345	2297	2.42
2	840	0.7	16,371	10,330	2195	2.53

the consolidation algorithm, and the same number of fractionation regions as the real data. The results for

- the real genomes,
- the model where duplicates are randomly deleted one at a time (so $\mu = 1$ and $p = 1$),
- the best model with geometrically distributed deletion length size, and
- a model with $\mu = 2$,

are compared in Table 1.

The results from the two diploids are similar with respect to μ , namely 1.7 and 1.8, but the p are rather different: 0.5 for *Vitis* and 0.7 for cacao. The most important fact is that in taking into account the sizes of the fractionation regions in the simulations requires us to increase the number of rearrangements substantially, by 50 % in the case of *Vitis* and by over 100 % for the cacao comparison.

Since we built no provision into the simulations for fractionation to affect the two homeologs differently there is no reason to expect the kind of fractionation bias we observed in poplar to show up in the simulations. Indeed, Fig. 10 shows that simulations with or without deletion event run size variability do not differ. This is further confirmation of the reality of the observed effect, that it is not an artifact of duplicate deletion regime nor of the consolidation algorithm.

4.7 Single-copy region syntenies with cacao and *Vitis*

Since the cacao and *Vitis* genomes have a long history of independent rearrangements, we can expect that fractionation regions induced via the consolidation algorithm by one of them in poplar will generally differ from the regions determined by the other. Nevertheless, we found many regions in the *Vitis*-poplar comparison that overlapped substantially in poplar with regions in the cacao-poplar comparison. In particular, we found eight regions that contained more than fifteen genes in both comparisons; six of these pairs of comparisons had more than fifteen genes in common; of most interest is that the common genes were 100 % on only one homeolog in seven of the eight cases. This strongly suggests that there is a functional reason for these large sets of contiguous genes to be reduced to single-copy, and for these copies to be retained on a single homeolog.

4.8 Discussion

An analytically advantageous feature of our analysis is that it partitions the rearrangements that have affected a tetraploid into those that have operated within a fractionation interval and those that have left these intervals intact, either because the intervals are outside the scope of the rearrangement or the interval is affected as a whole, without any effect internally. Of course, in the the history of the tetraploid there will have been some rearrangements that have involved elements both within and outside fractionation intervals, but these are rendered irrelevant and invisible to our analysis because their effect is simply to fragment the intervals into two or more new intervals, and hence perpetuate the within-outside partitioning of the rearrangements.

4.9 Some remaining problems

One of the problems remaining with this work is the large number of genes that do not appear in any synteny block in the diploid-tetraploid analysis of pairs of core eudicot genomes. This despite reducing the minimum block length as low as 2 in SynMap. Some of this is undoubtedly due to genes absent from one of the genomes, but much of it will be due to movement of genes out of their erstwhile homeologous contexts, by various processes (21; 22).

Although we have detected and measured substantial bias in the fractionation of ancient core eudicot tetraploids, without a gene-by-gene reconstruction of the ancestral chromosomes, we cannot

be sure that the bias is systematically in favor of one or other of the diploids contributing to the original polyploid. This dominance of one of the subgenomes has been demonstrated in the case of maize (20), where it was also correlated to gene expression, patterns which persisted despite a number of genome rearrangement events disrupting the original synteny relations among genes.

In our simulations of geometric deletion events, we “marked” some duplicate genes for deletion before carrying out the rearrangement step, and only actually deleted them afterwards. This was for purposes of comparability of the results with the previous simulations where deletions followed rearrangements. Our goal in this marking was to allow a degree of switching between homeologous chromosomes during the deletion event, and no connection was assumed between two different events. However, this computational device could also be used to model subgenome dominance, by using two different p 's, one for the dominant subgenome, and a smaller value for the other subgenome. Marking becomes analogous to (lack of) methylation, or to other epigenetic regulatory mechanism that can persist despite extensive genome rearrangement.

It will be of interest to explore the extensions of our treatment of fractionation to genomes descending from more complex polyploidization events than WGD. The plant genomes studied here, as well as all the other core eudicots, descend from an ancestral hexaploidization event (16). Extensive fractionation has left only a hundred or so triplicates intact and about a thousand duplicates, in *Vitis* and in cacao (23). Many core eudicot angiosperm genomes have been sequenced but as of yet no sequence of an angiosperm that diverged before the hexaploidization event has been published, so that extensions of our procedure could be tested.

ACKNOWLEDGEMENTS

We thank Jakub Kováč for a number of valuable comments and suggestions during the work reported here, and Eric Lyons for guidance to current trends in subgenome research. Research supported in part by grants from the Natural Sciences and Engineering Research Council of Canada (NSERC). DS holds the Canada Research Chair in Mathematical Genomics.

REFERENCES

- [1]Langham R.J., et al. Genomic duplication, fractionation and the origin of regulatory novelty. *Genetics* 2004; 166: 935–945.
- [2]Soltis D.E., et al. Polyploidy and angiosperm diversification. *American Journal of Botany* 2009; 96: 336–348.
- [3]Freeling M., et al. Fractionation mutagenesis and similar consequences of mechanisms removing dispensable or less-expressed DNA in plants. *Current Opinion in Plant Biology* 2012 (available online).
- [4]Eckardt N. A sense of self: the role of DNA sequence elimination in allopolyploidization. *Plant Cell* 2001; 13:1699–1704.
- [5]Wolfe K.H., Shields D.C. Molecular evidence for an ancient duplication of the entire yeast genome. *Nature* 1997; 387:708–713.
- [6]Dietrich F.S., et al. The *Ashbya gossypii* genome as a tool for mapping the ancient *Saccharomyces cerevisiae* genome. *Science* 2004; 304: 304–307.
- [7]Kellis M., et al. Proof and evolutionary analysis of ancient genome duplication in the yeast *Saccharomyces cerevisiae*. *Nature* 2004; 428: 617–624.
- [8]Fertin G., et al. *Combinatorics of Genome Rearrangements*. MIT Press; 1974.
- [9]El-Mabrouk N., Sankoff D. Analysis of gene order evolution beyond single-copy genes. *Evolutionary Genomics. Methods in Molecular Biology*, Anisimova M., Walker J.M., eds. Humana Press; 2012. p. 397–429.
- [10]Zheng C., et al. Guided genome halving: hardness, heuristics and the history of the Hemiascomycetes. *Bioinformatics* 2008; 24: i96–i104.
- [11]Sankoff D., et al. Towards improved reconstruction of ancestral gene order in angiosperm phylogeny. *Journal of Computational Biology* 2009; 16: 1353–1367.
- [12]Marron M., et al. Genomic distances under deletions and insertions. *Theoretical Computer Science* 2004; 325: 347–360.
- [13]Sankoff, D. Genome rearrangement with gene families. *Bioinformatics* 1999; 15: 909–917.
- [14]Zheng C., et al. Genome halving with an outgroup. *Evolutionary Bioinformatics Online* 2007; 2: 295–302.
- [15]Tuskan G. A., et al. The Genome of Black Cottonwood, *Populus trichocarpa* (Torr. & Gray). *Science* 2006; 313: 1596–1604.
- [16]Jaillon O., et al. The grapevine genome sequence suggests ancestral hexaploidization in major angiosperm phyla. *Nature* 2007; 449: 463–467.
- [17]Argout X., et al. The genome of *Theobroma cacao*. *Nature Genetics* 2011; 43: 101–108.
- [18]Lyons E., Freeling M. How to usefully compare homologous plant genes and chromosomes as DNA sequences. *The Plant Journal* 2008; 53: 661–673. <http://genomeevolution.org/CoGe/>
- [19]Lyons E., et al. Finding and comparing syntenic regions among Arabidopsis and the outgroups papaya, poplar and grape: CoGe with rosids. *Plant Physiology* 2008; 148: 1772–1781.
- [20]Schnable J., et al. Differentiation of the maize subgenomes by genome dominance and both ancient and ongoing gene loss. *Proceedings of the National Academy of Sciences U S A* 2011; 108: 4069–4074.
- [21]Wicker T., et al. Patching gaps in plant genomes results in gene movement and erosion of colinearity. *Genome Research* 2010; 20: 1229–1237.
- [22]Woodhouse M., et al. Different gene families in *Arabidopsis thaliana* transposed in different epochs and at different frequencies throughout the Rosids. *The Plant Cell* 2011; 23: 4241–4253.
- [23]Zheng C., et al. Ancient angiosperm hexaploidy meets gene order reconstruction of the eudicot ancestor. *Second IEEE International Conference on Computational Advances in Bio and Medical Sciences (ICCABS)* 2012.